

UNIVENT NATURAL SMOKE CONTROL SYSTEM

COMPLIANT WITH APPROVED DOCUMENT B 2006



Overview

Smoke Control for the common escape routes from flats to comply with Approved Document B 2006 of the Building Regulations.

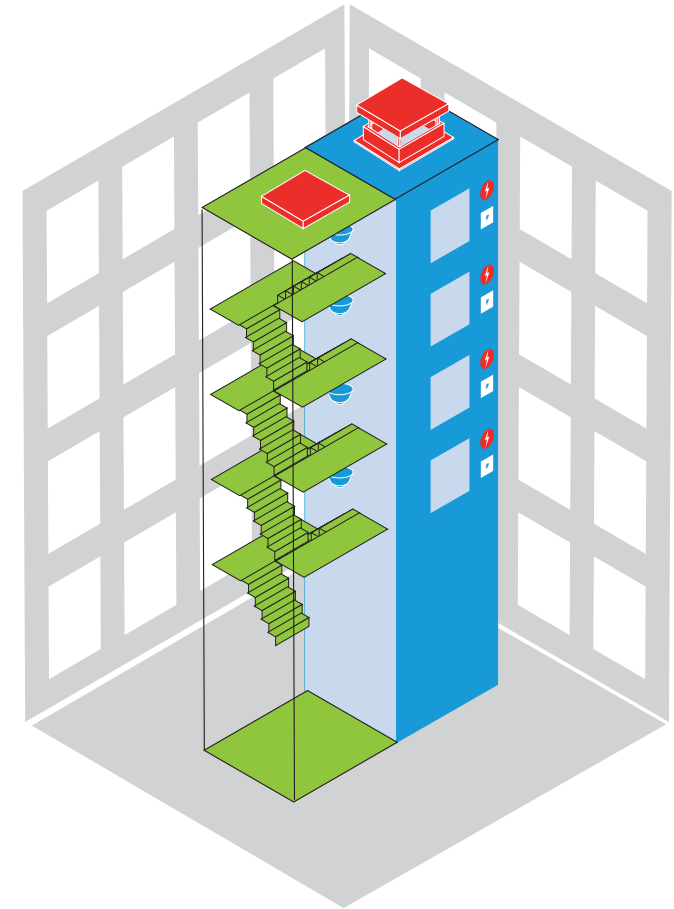
UniVent, the simple packaged system that offers a fast complete solution at low cost.

As uniVent is a standard solution a comprehensive information package is available on day one, from builders work and electrical requirements right through to operation and maintenance instructions so the frustration of delays while waiting for information are eliminated.

The uniVent Range

UniVent smoke shaft

The uniVent system by SCS Group was designed using the fundamentals of lean construction so that it requires no bespoke design or on site programming and is automatically configured to operate to the design control philosophy. In other words it works straight out of the box and can be used on almost any multi storey building.



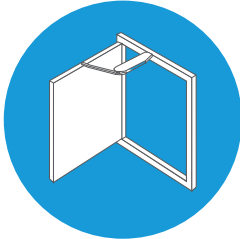
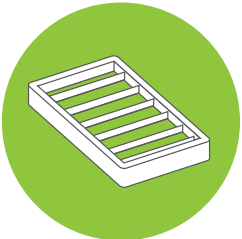
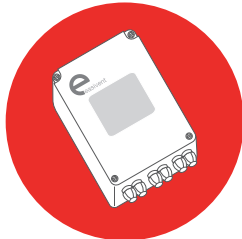
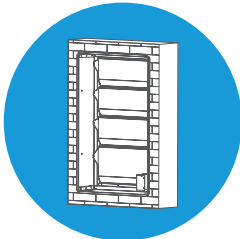
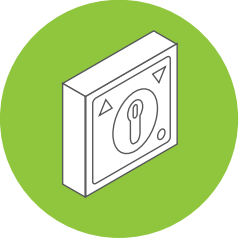
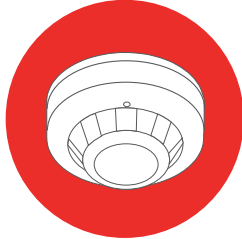
System general arrangement

UNIVENT NATURAL SMOKE CONTROL SYSTEM

COMPLIANT WITH APPROVED DOCUMENT B 2006



The uniVent Range - Smoke Shaft Components

AUTOMATIC LOBBY VENTILATOR (DOOR TYPE)		AUTOMATIC DISCHARGE VENTILATOR		CONTROL PANEL	
	<p>Manufactured from insulated galvanised steel with a polyester powder coated finish and integral electronic actuator. Available in 1.0m² or 1.5m² free area versions.</p>		<p>Lightweight and aerodynamically efficient louvre manufactured from aluminium. Suitable for mounting on builders work upstand or optional roof curb. Unit supplied with 24V actuator and dedicated power supply unit. Basic unit is mill finish single skin with thermal insulation and powder coating available as options.</p>		<p>Local control panel installed at each ventilator position. The panel includes a battery backed up 24VDC power supply and a pre programmed logic controller for automatic commissioning of complete system.</p>
AUTOMATIC LOBBY VENTILATOR (DAMPER TYPE)		OVERRIDE SWITCH		SMOKE DETECTOR	
	<p>A multi, parallel linked blade smoke damper manufactured from robust 1.5 mm galvanised steel and fully tested to the requirements of EN1366 Pt 2 for 1 hour. Usefully the damper combines both a low leakage rate, when closed, with a high free area, when open, to support high smoke evacuation rates. Dampers are fitted with a Belimo actuator to offer either a powered motor open/close or failsafe spring return open/closed actuation according to requirements. Unit can provide up to 1.5m² of free area. As standard, dampers are masked with a fixed blade type cover grille.</p>		<p>Local override switch adjacent to each ventilator which includes LEDs to display system status and an audible alarm for power failure.</p>		<p>A multi-criteria detector using a state of the art optical chamber and a class A1R thermal element combined with a microprocessor, running sophisticated algorithms to provide quick and accurate detection of fires. The combination of photoelectric and thermal characteristics provides a faster response to 'real fire' situations, while at the same time reducing the risk of unwanted environmentally generated alarms.</p>

UNIVENT NATURAL SMOKE CONTROL SYSTEM

COMPLIANT WITH APPROVED DOCUMENT B 2006



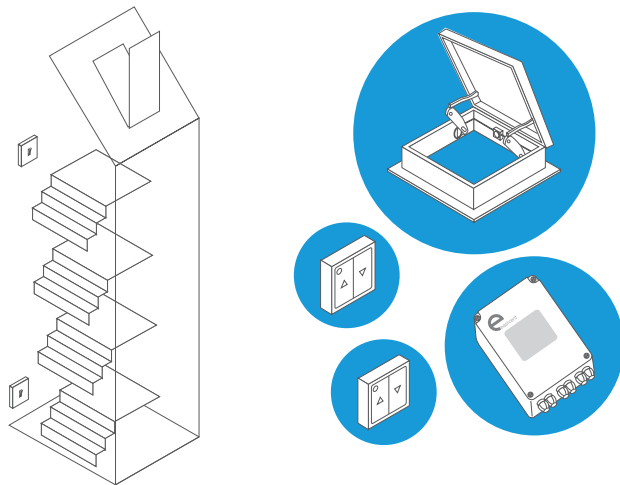
The uniVent Range (continued)

uniVent Stairwell Ventilator

A complete solution for ventilation of stairwells comprising a roof ventilator and control system.

The stairwell ventilator is a low profile automatic opening hatch with an opening angle of 120° to minimise wind effects. It can also be used for roof access. Manufactured from corrosion resistant aluminium with rockwool insulation, it has a geometric free area of 1.0m² and is available in a variety of finishes.

The control kit comprises a local control panel with battery backed up 24VDC supply and 2 remote control switches for positioning at the top and bottom of the staircase. The control panel can accept a signal from lobby ventilators



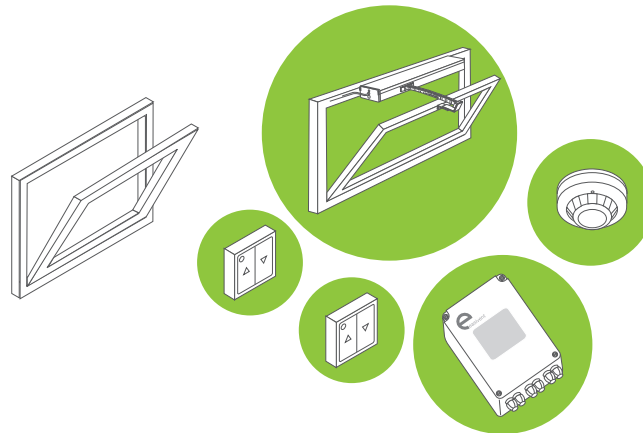
The uniVent Range (continued)

uniVent Window

An automatic actuator solution to convert windows to Opening Ventilators or Automatic Opening Ventilators

High quality slimline chain drive actuator with brackets for installation to a wide range of windows. Can be used as both an AOV and an OV with the appropriate control kit.

The control kit for the Opening Ventilator (OV) comprises a local control panel with battery backed up 24VDC supply, and a remote control switch. An optical smoke detector is included in the Automatic Opening Ventilator (AOV) kit. The control panel can send a signal to automatically open a stairwell ventilator (required by Building Regulations).



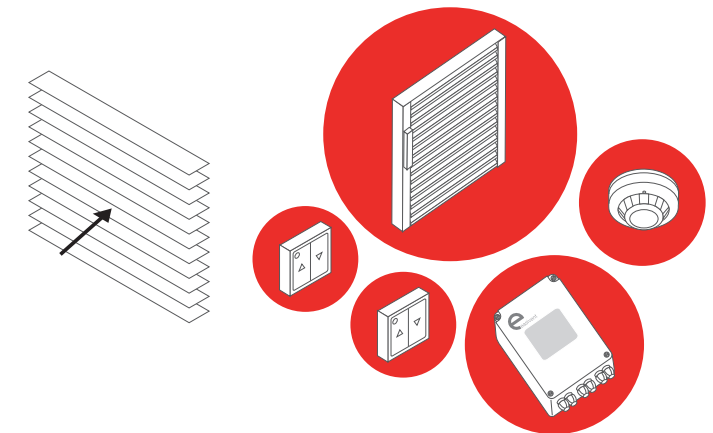
The uniVent Range (continued)

uniVent Louvre

A most attractive and versatile ventilator designed to integrate with all types of building façade.

Featuring a thermally broken aluminium frame and double glazed louvre blades, the unit offers good air leakage and insulation characteristics. Can be used as both an AOV and an OV with the appropriate control kit.

The control kit for the Opening Ventilator (OV) comprises a local control panel with battery backed up 24VDC supply, and a remote control switch. An optical smoke detector is included in the Automatic Opening Ventilator (AOV) kit. The control panel can send a signal to automatically open a stairwell ventilator.



UNIVENT NATURAL SMOKE CONTROL SYSTEM

COMPLIANT WITH APPROVED DOCUMENT B 2006



What is included in your quotation:

Unless confirmed in writing, this is what we provide:

- Project management to our ISO9001 procedures, including provision of design drawings, method statements and risk assessments
- Field wiring, identification and testing
- All cables, junction boxes and flex outlet plates.
- Termination and connection of field wiring to position of control panels and field devices
- On completion of commissioning, we provide 1 day of demonstration to approving authorities
- Standard limited warranty period
- First year's maintenance of system to comply with requirements of fire safety legislation

Optional additional cost items:

- Electrical containment
- Power supplies
- Additional system demonstrations
- Smoke tests
- Collateral warranties

Attendances by others:

- Material off loading and safe storage
- External hoisting and positioning of roof-mounted equipment
- Welfare facilities
- Task lighting and 110V power
- Safe access equipment, hoisting, craneage or scaffolding

Builders work by others:

- Forming and weathering of staircore and smoke shaft upstands.
- Forming of smoke shaft to a tight construction in accordance with BS EN 12101-6
- Forming of openings at each level for lobby smoke dampers
- Forming of openings above ceiling for environmental dampers
- Load bearing roof for smoke extract fans and ancillaries
- Chasing out walls and making good